

10 Lion Court, Hadleigh, Suffolk, IP7 5JE

Available from: 9th January 2026
Furnishing: Unfurnished

Rent: £1,100 Per month
Deposit required: £1,269

THE
**LETTING
DEPARTMENT**





WELL PRESENTED TWO BEDROOM COTTAGE

- Two Bedrooms
- End Terrace
- Parking
- Courtyard

Located in the centre of Hadleigh, 10 Lion Court is a well presented end terrace, two bedroom property.

On the ground floor the property has the kitchen and a good sized living room with doors to a private courtyard, together with a downstairs cloak room.

On the first floor there is a family bathroom and two double bedrooms.

Outside:

The property comes with parking for one car and a courtyard with side access.

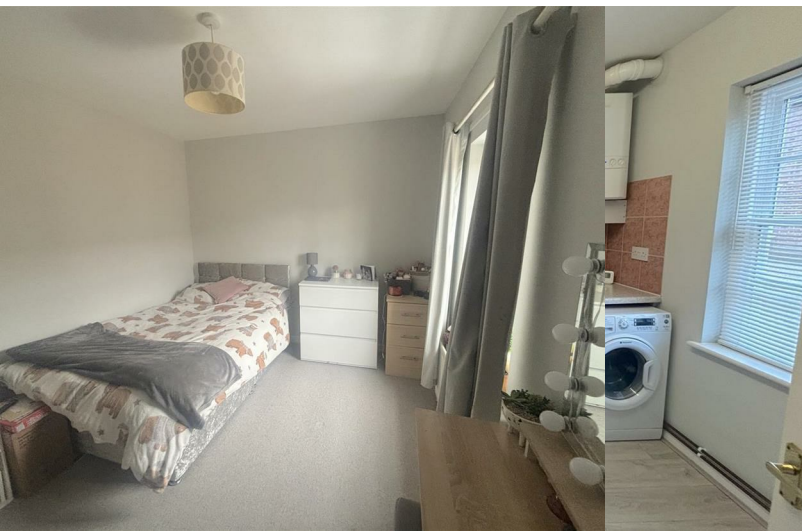
Lion Court is very conveniently located just off the High Street and within walking distance of all the shops and amenities of Hadleigh.

Hadleigh is a very popular historic market town situated about 9 miles west from Ipswich and 8.2 miles from Manningtree with direct train links to London Liverpool Street. The bustling town centre offers a wide range of local amenities including restaurants, pubs, sports facilities and a wide selection of shops, as well as both Junior and Senior schools.



Local Authority and Council Tax
Babergh, Band B

EPC Rating
Current C(69). Potential B(86).



All enquiries:

Donna Spark
donna@thelettingdepartment.co.uk

The Letting Department
info@thelettingdepartment.co.uk
01473 372 222